

ONDUPLAST COLOUR ROOFING SHEETS



WATERPROOFING
★ ★ ★ ★ ★
10 YEARS
GUARANTEE



Lightweight



High Quality



Easy
to install

**OPAQUE FIBREGLASS
SHEETS WITH A SPECIAL
POLYESTER FILM**

www.onduline.co.uk

Onduline[®]
Lightweight roofing systems

ONDUPLAST COLOUR



ONDUPLAST® COLOUR

Fibreglass reinforced polyester



Waterproofing



High Quality

Technical characteristics

	ONDUPLAST COLOUR
Length	200 cm
Width	90 cm
Corrugation height	18 mm
Corrugation width	76 mm
Thickness	0.7 mm
Colours	Light Grey, Brick Red, Green
Light transmission	0% totally opaque sheet
Superficial protection:	External surface protected with a special isophthalic resin (Gelcoat), bonded to the GRP surface during hot lamination – particularly stable against atmospheric agents and shock resistance retains its structural and functional integrity over time avoiding superficial abrasion/erosion.

A highly chemical resistant roofing and cladding sheet with excellent wind upload properties, durability and technical strength. Versatile in application, ONDUPLAST COLOUR is simple to install and carries a **10-year weather proof guarantee.**

Accessories

Securely fixed with ONDULINE UNIVERSAL SCREWS and available in all colours to match the ONDUPLAST COLOUR sheets.



100 screws per pack

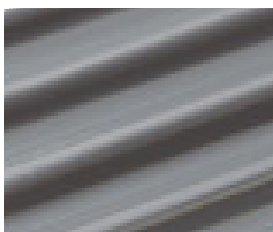
Screw length including cap:

60mm

Diameter: **3.9mm**

Diameter at the top: **16mm**

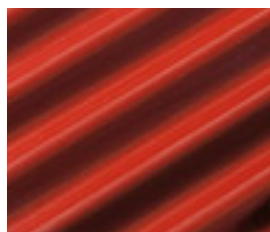
Colour range



Light grey



Green



Brick red

Onduline Building Products Ltd

Dawson House

Jewry Street

London | EC3N 2EX

enquiries@onduline.net

+44 (0)207 727 0533