

# ONDULINE EASYFIX SHEETS



Lightweight



Eco-responsible



Easy to install

**BITUMINOUS CORRUGATED  
ROOF SHEETS IN STYLISH  
INTENSE COLOURS**

[www.onduline.co.uk](http://www.onduline.co.uk)

**Onduline**<sup>®</sup>  
Lightweight roofing systems

ONDULINE EASYFIX



# ONDULINE EASYFIX®

## Bituminous corrugated sheets in intense colours



### Technical characteristics



	ONDULINE EASYFIX
Length	200 cm
Width	81 cm
Thickness	2.6 mm
Corrugation height	38 mm
Weight per sheet	4.5 kg
Weight per m <sup>2</sup>	2.77 kg

### Accessories

For complete waterproofing for 10-years, ONDULINE EASYFIX can be fitted with a range of complementary accessories and fixings:



For maximum ventilation, **ONDUTISS** membranes are the recommended air permeable membrane to use with ONDULINE EASYFIX for all timber build structures.



A number of fixings are available to colour match the full range of **ONDULINE EASYFIX** sheets:

- Universal screws
- Safe top nail
- PE Nails

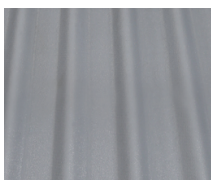
ONDULINE UNIVERSAL SCREW

See the full range of accessories at [www.onduline.co.uk](http://www.onduline.co.uk)

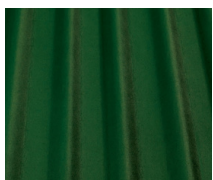
### Colour range



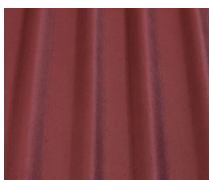
Intense Black



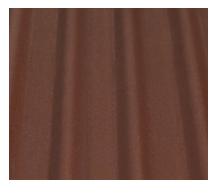
Intense Grey



Intense Green



Intense Standard Red



Intense Brown

**Onduline Building Products Ltd**  
Dawson House  
Jewry Street  
London | EC3N 2EX  
[enquiries@onduline.net](mailto:enquiries@onduline.net)  
+44 (0)207 727 0533