

Your advantages

- **Save your time:** designed to match with numerous sandwich panels, no accessories required
- **Profit from fast and effortless installation:** Factory Assembled Insulating Rooflight
- **Differentiate your offer providing "Special renovation" solution:** reinforced range (PC R & PLR R) by passing need of roof layout

Your customers advantages

- **Improved well-being** thanks to optimized light transmission
- **Thermal insulation:** special Thermal option PC T or PLR T
- **Long lasting protection:** perfect weather tightness, no sag effect
- **Bill cuttings** thanks to insulation and use of natural light

ROOFLIGHTS

Boost my business!

ONDUCLAIR® THERMO

Factory-assembled Rooflight system, designed to transmit daylight through composite panel roofs.



Farm buildings



Industrial buildings



Public-access buildings



EN-1013



Reaction to fire Euroclass B-s1, d0

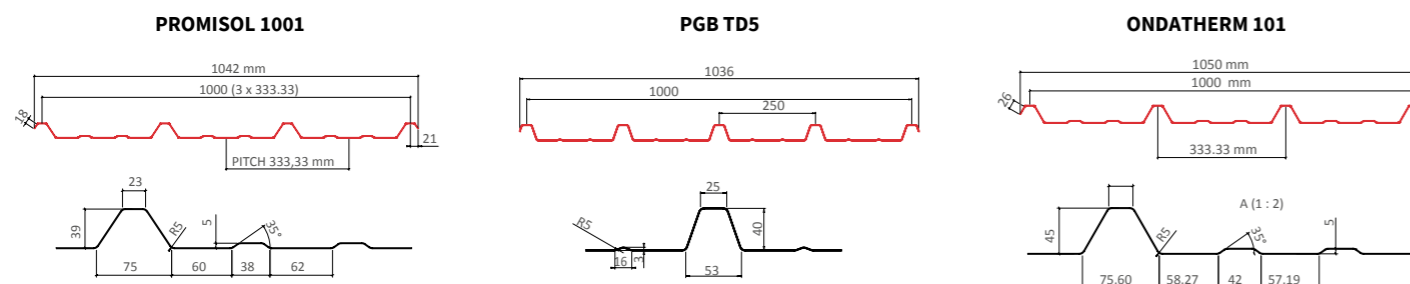
Technical characteristics

	THERMO PLR	THERMO PC	THERMO PLR T	THERMO PC T	THERMO PLR R	THERMO PC R
Description	Panels composed of a top skin and a 4 mm multiwall polycarbonate bottom skin connected together with extruded structured polycarbonate profiles		Panels composed of a top skin and 4 mm multiwall polycarbonate intermediate layer and bottom skin, connected together with extruded structured polycarbonate profiles		Panels composed of a top skin and a 4 mm multiwall polycarbonate bottom skin connected together with extruded structured polycarbonate profiles and longitudinal polycarbonate reinforcements located under each rib	
Top skin material	Polyester	Polycarbonate	Polyester	Polycarbonate	Polyester	Polycarbonate
Length	From 1.50 to 6.50 m (casing)					
Thickness	30, 40, 50, 60 and 80 mm		100-120-140 mm (60, 80 and over 140 mm upon request)		30, 40, 50, 60 and 80 mm	
Light transmission	Colorless: 65 %	Crystal: 76 %	Colorless: 50 %	Crystal: 53 %	Colorless: 65 %	Crystal: 76 %
Service temperature	-40°C to 110°C under continuous exposure					
U value	down to 1.49 W/m ² .k		down to 0.83 W/m ² .k		down to 2.37 W/m ² .k	

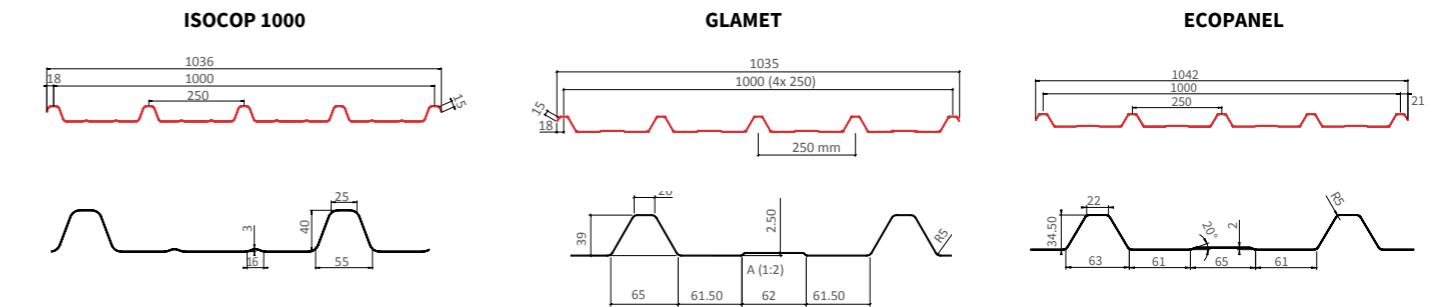
- ONDUCLAIR® THERMO PLR / PC R has successfully passed the 1200 Joules certification.

Range

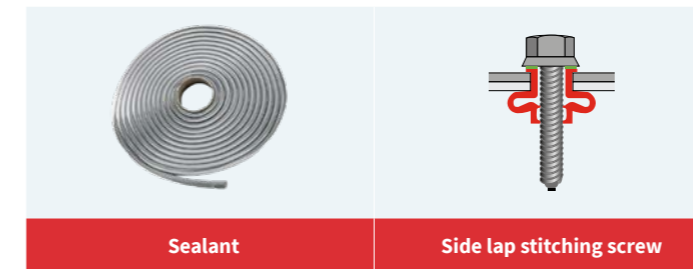
TYPICAL PROFILES (OTHER PROFILES AVAILABLE ON REQUEST):



Range



Accessories



Sealant

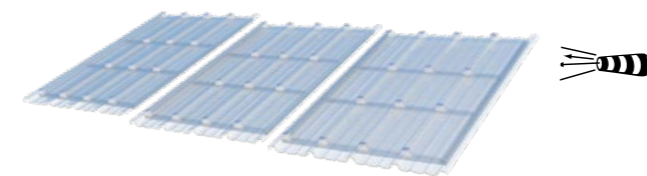
Side lap stitching screw

Colours

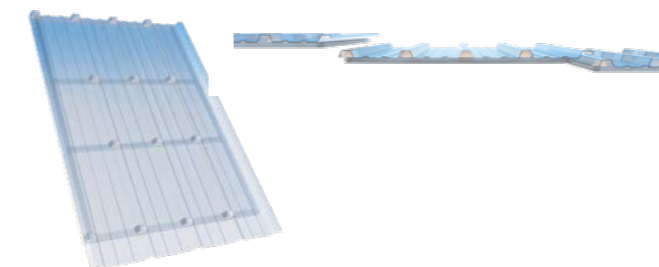
- Colorless (PLR)
- Crystal or opal 66% light transmission (PC)

Other colours available on request

Installation principles



- 1 **VERTICAL LAYING DIRECTION:** From the eaves to the ridge. The downslope lap* of the top panel covers the bottom panel already installed. The installation will always be carried out with the ribs running down the slope of the roof.
*cut back



- 2 **HORIZONTAL LAYING DIRECTION:** Opposite direction of the prevailing wind. The panel to be installed covers, along the adjacent longitudinal edge, the panel installed previously.



Please refer to the Installation guide on onduline.com