



Material / Application

Vertical vapour barrier. High-density polyethylene.

Intended to be used as vertical insulation of foundations, walls or floorings being directly in touch with the substrate. Can also be used as insulation of terraces, floors or as a layer draining water from green roofs. Additional thermal insulation of foundation walls.

Characterised by high flexibility and tensile strength and resistance to tear. Therefore, it can resist tensions resulting from loading or movement of drying floor even on a very uneven substrate.

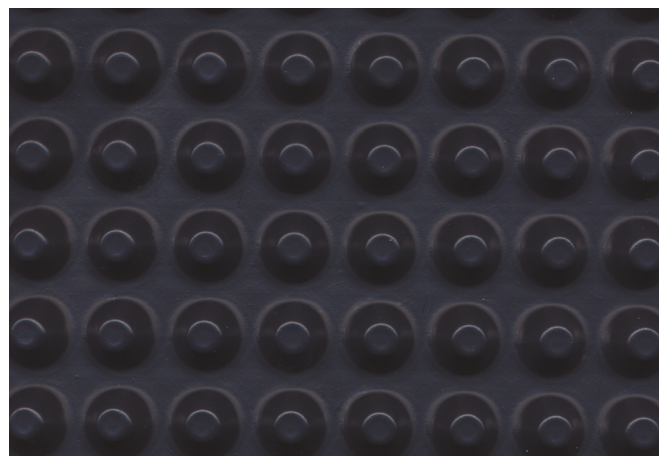
Useful properties declaration: 13-4-01.3

Technical characteristics

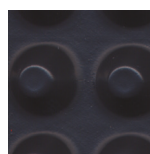
Thickness	PN-EN 1849-2:2010	400 µm ± 20%
Width	PN-EN 1848-2:2003	2 m
Length	PN-EN 1848-2:2003	20 m
Basic weight	PN-EN 1849-2:2003	400 g/m ² ± 10%
Resistance to static load (met.B)	PN-EN 12730:2001	20 kg
Number of rolls per pallet	-	12
Pallet	-	Wooden, 800 x 1200 industrial pallet
Total pallet dimensions	200 cm	1200 x 800 x 2140 mm

Packaging

Type of folding	Band
Film folded to (m)	2
Roll diameter (mm)	300 ± 10%
Acceptable tolerance for the product (width x length x thickness)	2mb ± 1% x 20mb ± 0,5% x 400 µm ± 20%



Color



Black/anthracite

Installation

The embossing ensures an air gap is formed between the building structure and thermal insulation. This gap ensures excellent draining of water vapour preventing excessive accumulation of moisture and development of hydrostatic pressure in areas of the building at risk of moisture accumulation. The embossing additionally prevents movement of the insulation due to settlement of backfill. High resistance to pressure, tear, break, wear and puncture.

Properties and storage

Films should be stored in their original packaging, away from UV radiation. Please keep the label as it contains important information about the product.

onduline.com

ONDULINE
24 Quai Gallieni
F-92150 Suresnes